

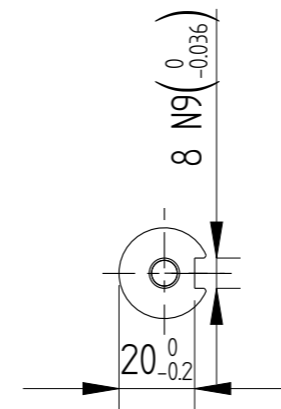
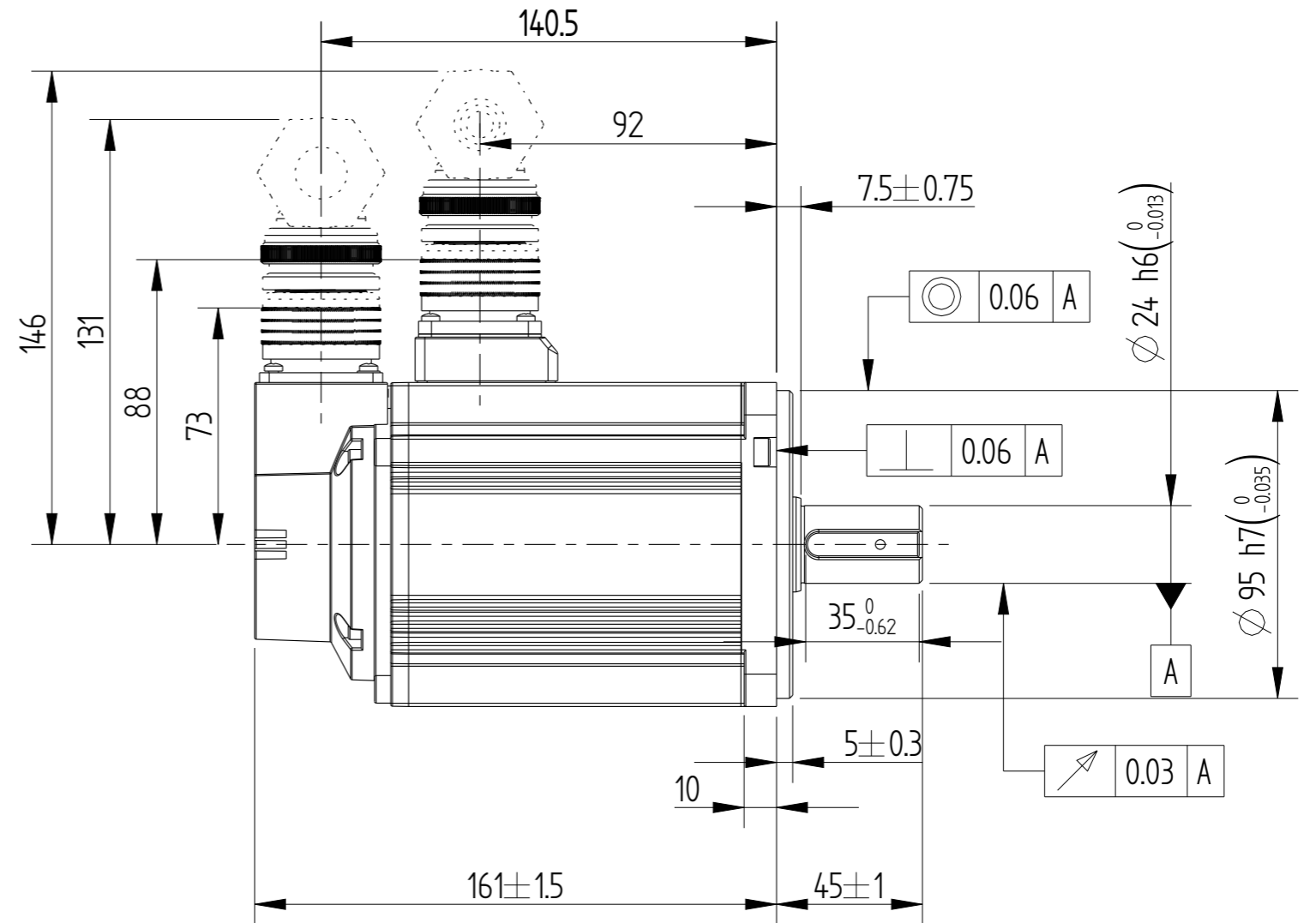
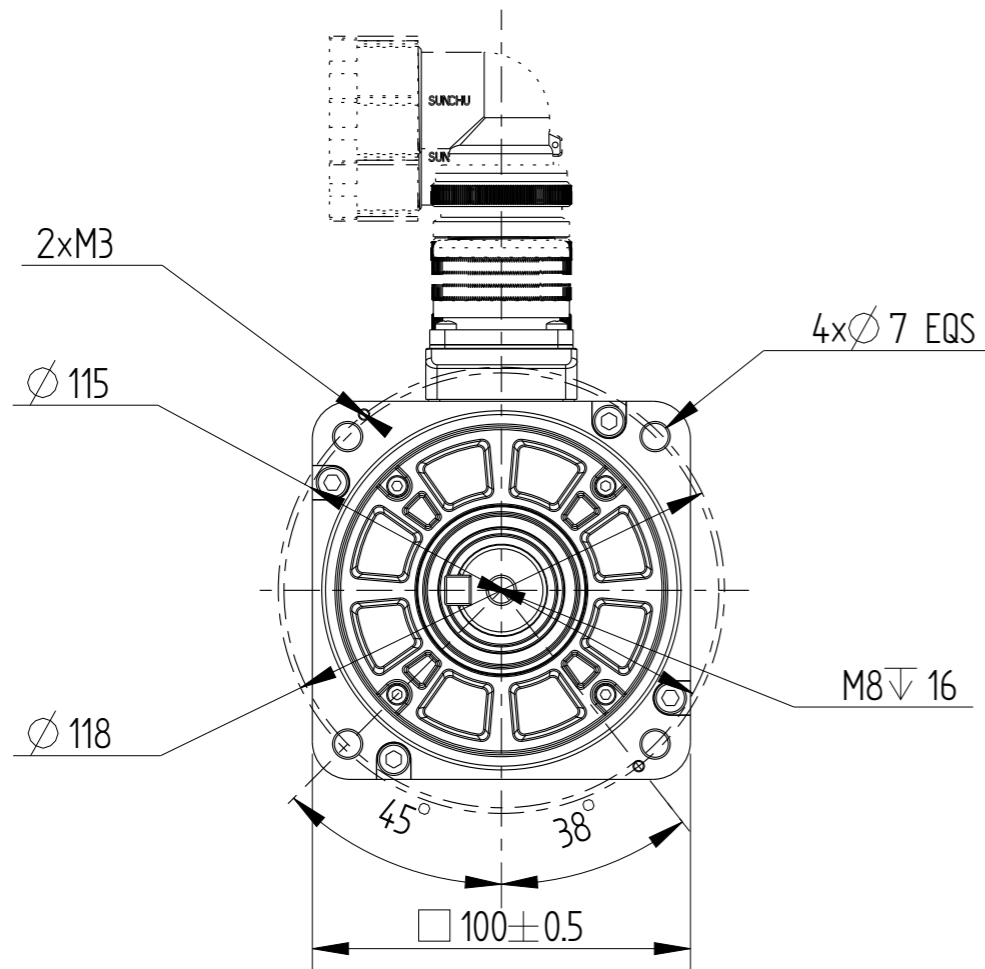
Copyright: Copyright infringement reserved.

INOVANCE

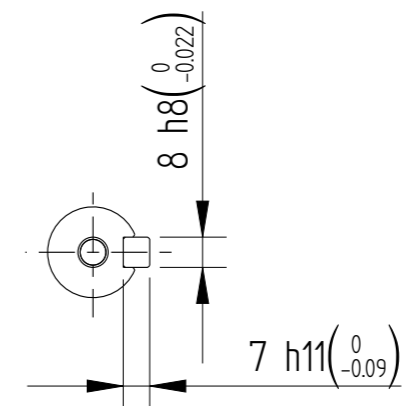
A3

Amendment	Description

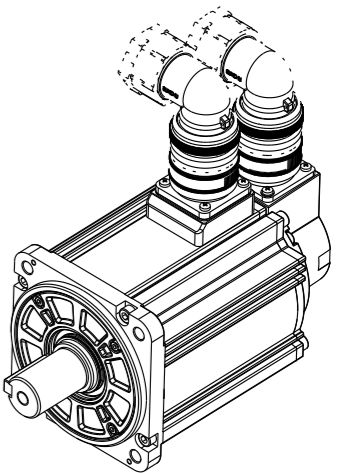
Unit: Millimeter (mm)



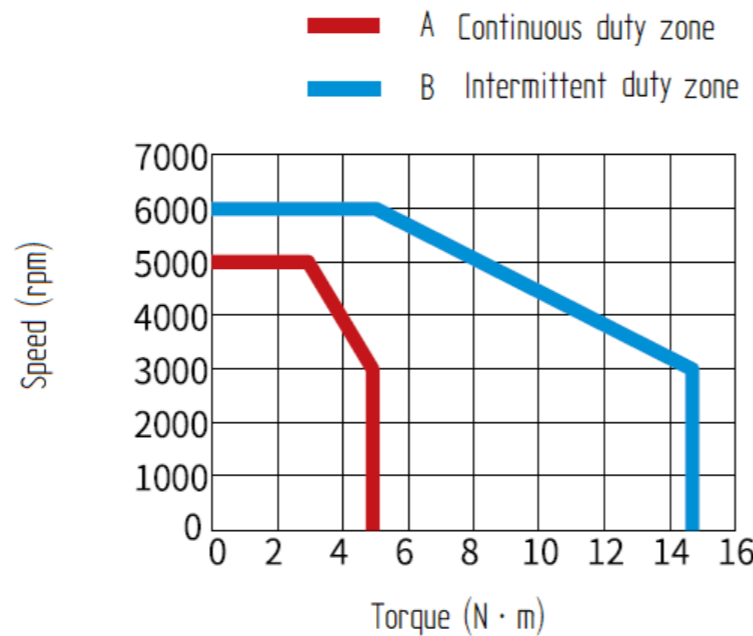
Dimension of shaft end




Dimension of shaft end with key



Basic function parameters	
Rated power KW	1.5
Rated voltage V	220
Rated current A	$\leq 8.6$
Peak current at rated speed A	$\leq 32$
Rated torque Nm	4.9
Peak torque at rated speed Nm	14.7
Rated speed rpm	3000
Max speed rpm	6000
Rotor inertia kg $\cdot$ cm $^2$	2.35 $\pm$ 10%
Encoder resolution	23bit
Insulation class	F(155° C)
Protection level	IP67
Static torque of brake Nm	/
Brake power supply	/
Duty cycle	S1
Radial line load N	686
Axial load N	196



				Motor Outline Drawing			01117916-WX	
B00	New Archive	/	20230916					
Version	Change method	Changed by	Date					
Design	/			/			Mark	
Check	/							
Craft	/							
Verify	/			Weight	Scale	Version	Page 1 of 1	
Standardization	/			4.65kg	1:2	B00	Model	MS1H2-15C30CB-A331R-INT
Approve	/							